

## PAK

## Video Wall & KVM Nodes



### Modular Video Walls & KVM for Professional and Mission-Critical Applications

PAK™ is a compact and cost-effective processing appliance that can work as a standalone unit or can be stitched to each other to build KVM operator stations and IP video walls of any size. PAK is ideal for multi-room visualization, situational awareness, control rooms, and corporate workspaces.



#### SIMPLE

Easy to configure, install, and manage.



#### VERSATILE

Utmost flexibility and scalability. One node. Endless possibilities.



#### RELIABLE

Minimized impact of failure. 24/7 dependability.



#### ECO-FRIENDLY

Smaller footprint. Low power consumption.



#### KVM

Control of remote sources with low latency



#### SECURE

High Security. No Windows updates.



#### EASY MAINTENANCE

Easy to replace. Easy to troubleshoot.



#### HIGH PERFORMANCE

Up to 8x 4K or 32x HD decodes per node

### PAK Hardware



PAK 10 & PAK 20, front



PAK 40, front



PAK 10 & PAK 20, back



PAK 40, back

## PAK Features & Benefits

### Simplified Deployment

Stitching PAK nodes together is an effortless way of creating KVM operator stations and IP video walls of any size. The PAK Configuration Tool is user-friendly and helps in configuring the system by selecting tiling arrangements, setting bezel compensation, and configuring outputs and resolutions. This makes setting up your system much easier.

### Easy Troubleshooting

VuWall offers a variety of potent diagnostic tools that allow for monitoring of PAK node usage and logging of activities. These tools are specifically designed for quick and easy troubleshooting and problem resolution.

### Multiview with KVM

Sources from remote PCs can be controlled with keyboard and mouse via IP KVM encoders such as VuStream 350. Those source can then be displayed alongside IP streams from encoders, cameras, or TV channels.

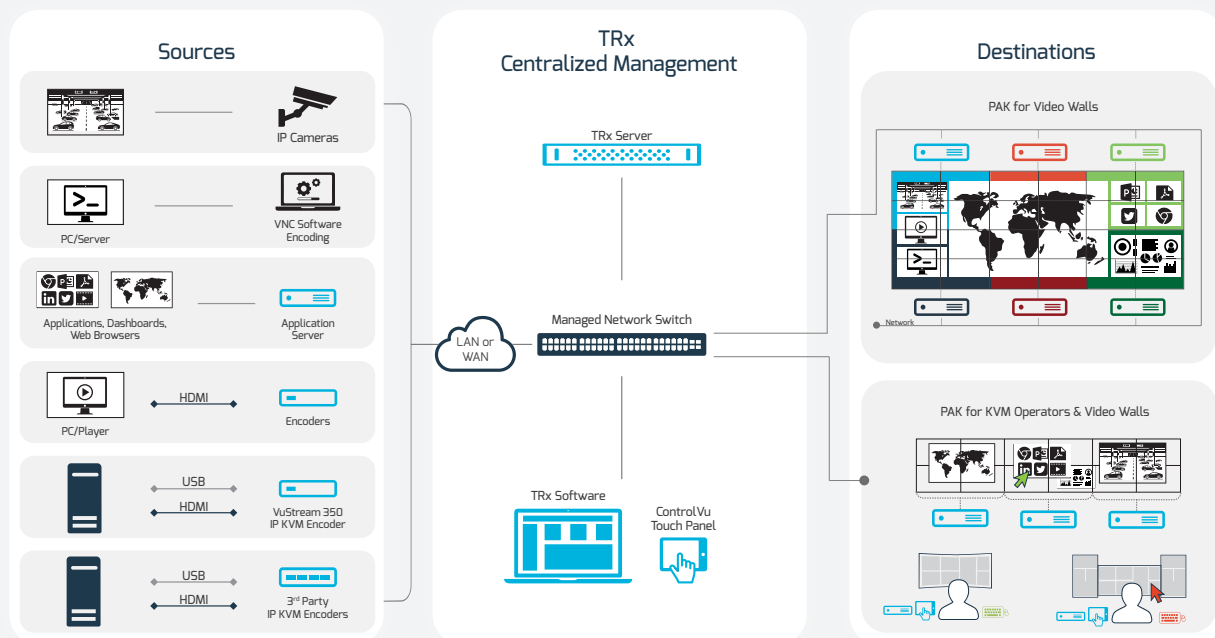
### Secure Access

By utilizing password-protected KVM environments, installations can be safeguarded by restricting access and control of KVM systems to authorized users only. This security measure is crucial in preventing unauthorized access that could result in security breaches and other related incidents. Implementing password-protected KVM enables organizations to have better control over their IT system and achieve a higher level of security.

### Eliminating a Single Point of Failure

Thanks to PAK's modular implementation, if one of the PAK appliances powering a video wall fails or is turned off, only the portion of the video wall that is driven by that PAK unit will be affected, while the rest of the video wall continues to operate normally. This design minimizes the impact of failure on your system. Once the PAK appliance comes back online, the affected displays will recover automatically.

## PAK Video Wall and KVM Control - Workflow



# VuWall PAK Technical Specifications



Product Name	PAK 10	PAK 20	PAK 40
Part Number	PAK-10-3	PAK-20-3	PAK-40-2
Hardware			
Weight	1500g / 3.3lbs		1300g / 2.9lbs
Dimensions	165 x 200 x 39.5mm (WxDxH) 6 x 7.9 x 1.55" (WxDxH)		165 x 190 x 43mm (WxDxH) 6 x 7.5 x 1.7" (WxDxH)
Power Consumption	20W		20W
Power Supply	90W adapter Input: 100-240 VAC, 50/60 Hz Output: 19V/4.74A DC		120W adapter Input: 100-240 VAC, 50/60 Hz Output: 19V/6.32A DC
Operating Conditions	Operating temperature range: 0-40°C / 32-104°F, Relative humidity, non-condensing: 10-90%		
Cooling	Fanless: Passive Cooling		Fanned: Active Cooling
Warranty	3 years		
Networking			
Connectors and Standard	2x RJ45, 1GbE (each)		
IP Version & Addressing	IPv4 and IPv6, Static IP and DHCP		
Distribution Method	Unicast and Multicast		
Require Switch	Managed Layer2 Switch with IGMP Snooping/Querier/Immediate-Leave (Fast-Leave)		
Software			
Management	VuWall TRx	VuWall TRx, On-Screen Display and Keyboard Shortcuts*	
KVM Control			
USB	Not available	2x USB-HID (for keyboard and mouse)	
KVM Modes	Not available	Point-to-Point, Point-to-Multipoint, Multi-Source Control, Multiview	
Outputs			
Connections	1x HDMI or 1x DisplayPort 1.2	1x HDMI and/or 1x DisplayPort 1.2	2x HDMI and/or 2x DisplayPort 1.4
Max. Resolution	1x 1920x1080 @ 60Hz	1x 3840x2160 @ 60Hz or 2x 1920x1080 @ 60Hz	1x 5120x2160 @ 60Hz or 2x 5120x1440 @ 60Hz or 2x 3840x2160 @ 60Hz or 4x 1920x1080 @ 60Hz
Audio Output Format	Stereo, 48 kHz		
Decoding			
Decoding Capability***	16 x HD30 H.264/H.265 IP OR 8 x HD60 H.264/H.265 IP OR 2 x 4K30 H.264/H.265 IP OR 1 x 4K60 H.264/H.265 IP (all above 4:2:0 streams)  OR  1 x VNC** regardless of resolution	16 x HD30 H.264/H.265 IP OR 8 x HD60 H.264/H.265 IP OR 2 x 4K30 H.264/H.265 IP OR 1 x 4K60 H.264/H.265 IP (all above 4:2:0 streams)  OR  Up to 2 x VuStream-350**/VNC** 2 x VuStream-350/VNC x HD or 1 x VuStream-350/VNC x UHD	32 x HD30 H.264/H.265 IP OR 16 x HD60 H.264/H.265 IP OR 8 x 4K30 H.264/H.265 IP OR 4 x 4K60 H.264/H.265 IP (all above 4:2:0 streams)  OR  Up to 8 x VuStream-350**/VNC**: 8 x VuStream-350/VNC x HD OR 4 x VuStream-350/VNC x UHD
Streaming Protocols	RTSP, MPEG2-TS		
Formats	H.264, H.265, RealVNC, Standard VNC, Streams from VuWall Application Server (Web Browsers, Applications, and Dashboards)	H.264, H.265, RealVNC, Standard VNC, Streams from VuWall Application Server (Web Browsers, Applications, and Dashboards), proprietary streams from VuStream 350	
Supported Audio Format	AAC, 32kHz to 96kHz		
Mounting Hardware			
VESA	75/100mm (Hardware included)		
Rackmount	Rackmount Kit Available to Mount 2x PAKs (Sold Separately – Part Number: PAK-Rack-Mounting-Plate)		

\* On-screen display and keyboard shortcuts are only available when PAK is configured as a KVM capable device.

\*\* Adaptive Frame Rate depending on actual motion & content of the sources.

\*\*\* Performance may vary depending on bitrate and other stream settings



## PAK for KVM Operators



### On-Screen Display

Built-in intuitive on-screen display allows for easy personal video wall layout changes, all with simple selection.

### Secure PAK Appliance

Password-protected node requires user login. User access to video, keyboard & mouse are all configurable.

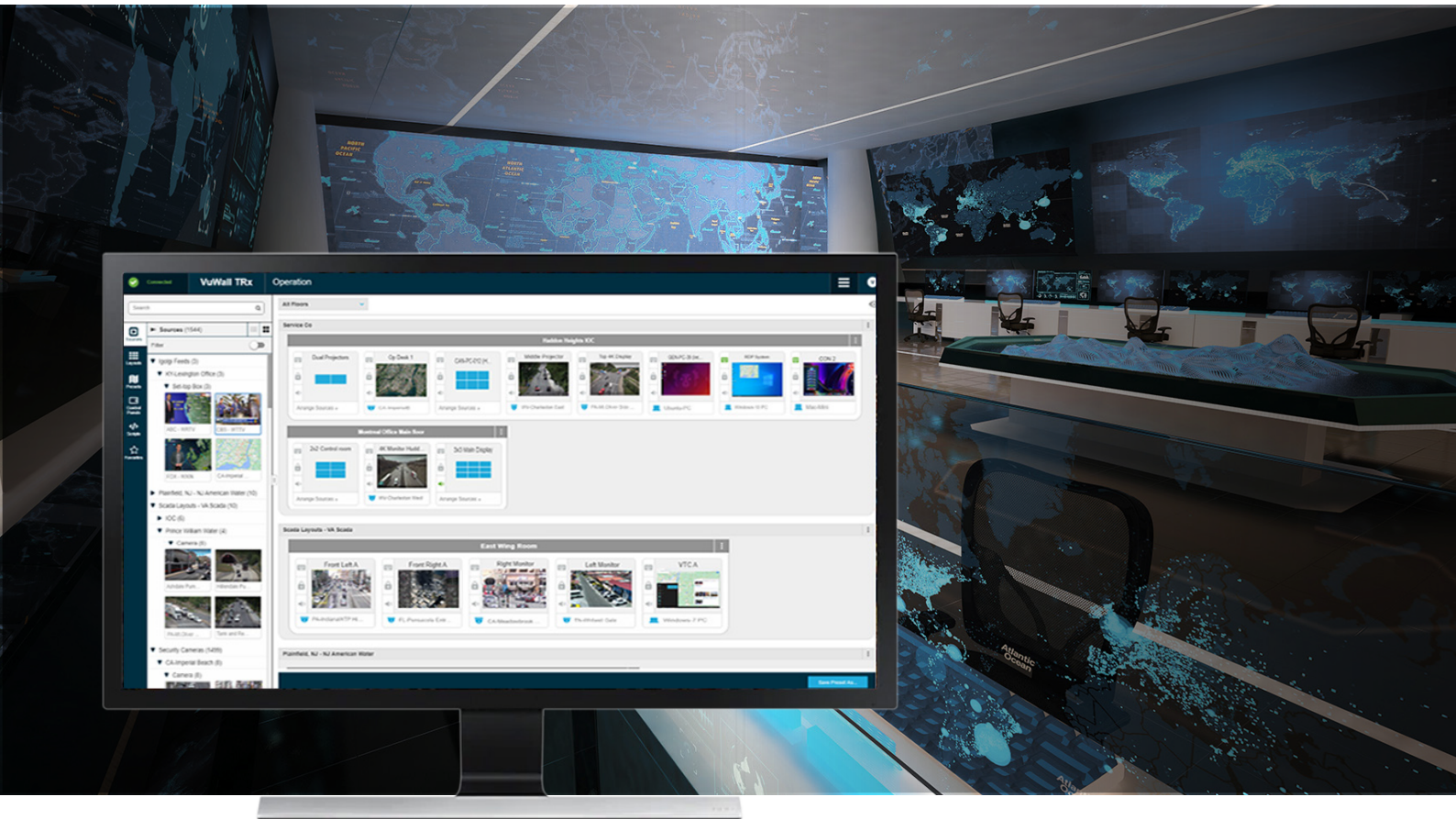
### ControlVu Touch Panel

ControlVu™ gives operators the freedom to change layouts and control devices with a simple touch.

### Keyboard & Mouse

Control your personal workstation and all sources with keyboard and mouse. Keyboard shortcuts can be used for fast switching through layouts.

# VuWall's TRx Software



Manage all your PAK nodes with the award-winning TRx software – a single, common platform to manage your entire video wall and AV distribution ecosystem.

TRx is the only platform that combines AV-over-IP distribution, advanced multi-video wall and KVM management. It is a centralized platform used to configure, manage and distribute virtually any source type to any display with easy drag-and-drop and no programming required.

TRx features an intuitive interface, a built-in HTML-based control panel designer, scripting, advanced security, user rights management, and an extensive API. Thanks to its interoperable and hybrid design, TRx simplifies the deployment of complex AV-over-IP projects.

## Contact Information

### CORPORATE HQ

VuWall Technology Inc.  
181 Hymus Blvd., Suite 301  
Montreal, Quebec  
H9R 5P4, Canada  
+1 514 505 4436

### EUROPEAN HQ

VuWall Technology Europe GmbH  
Birkenweg 15  
72766 Reutlingen  
Germany  
+49 7121 766620

### US OFFICE

VuWall USA Inc.  
1000 Holcomb Woods Parkway  
Suite 401  
Roswell, GA, 30076 USA  
(844) 933 9255




Control what you see.

[www.vuwall.com](http://www.vuwall.com)

[sales@vuwall.com](mailto:sales@vuwall.com)