

VuScape

Custom Video Wall Controller

Visualization solutions for professional and mission-critical applications

VuScape™ is a high-performance video wall processor ideal for small or large video wall deployments with custom requirements, in control rooms and corporate workspaces. Easily control and distribute all content sources to any display on your network with the utmost flexibility and full-featured management software.



Features

- ✓ Power up to 96 displays with a single controller
- ✓ Capture up to 40x 4K sources with a single controller
- ✓ Mix baseband and IP sources on the same controller (Multiple 4K HDMI/Display Port inputs)
- ✓ Display up to 160 HD IP streams simultaneously
- ✓ Decoding of IP streams through hardware up to 4K
- ✓ Display an unlimited number of windows per screen
- ✓ NVIDIA Quadro GPU with 3D Acceleration available
- ✓ Encoding of HDMI inputs or of the video wall up to 4K
- ✓ Single chassis solution for a simplified deployment
- ✓ 24-bit true color image processing at full frame rate
- ✓ Support for standard Windows applications
- ✓ Dependable for 24/7 mission-critical operations



User Friendly

Video wall control made easy. Our systems are easy to deploy, easy to use and easy to manage.



Future Proof

Open architecture, standards-based, and interoperable with 3rd party solutions.



Dependability

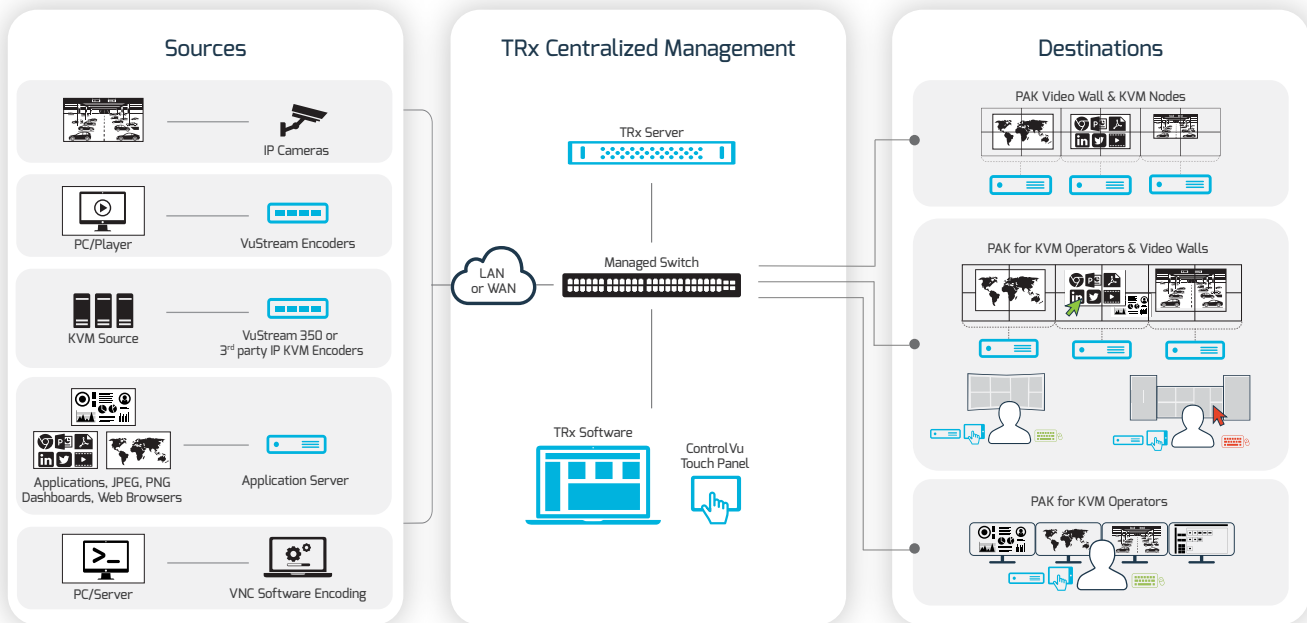
Optimized for real-time throughput providing reliable 24/7 operations.



Modular And Scalable

Only buy what you need. Our system can grow with you as you needs change.

Workflow



Applications

Control Rooms



Corporate Workspaces



Experience Centers



Crisis Rooms



Lobby Signage



Classrooms and Auditoriums



Selecting the Right VuScape Video Wall Controller



VuScape	VS60	VS120	VS280	VS640
IDEAL FOR	Small video wall with limited space and need for GPU and decoding	Midsized video wall with many inputs & outputs requiring GPU and more IP decoding power	Midsized video wall with even more inputs & outputs requiring GPU & more IP decoding power	Large video wall with many inputs, outputs and IP decoding
FORM FACTOR	Tower	Rackmount 4RU	Rackmount 4RU	Rackmount 4RU each
MAX OUTPUTS	4x 4K	16x 4K	16x 4K	24x 4K or 32x HD
MAX INPUTS	4x 4K	12x 4K	24x 4K	32x 4K and/or 64x HD
MAX SIMULTANEOUS IP STREAMS	16x HD / 4x 4K	48x HD / 12x 4K	96x HD / 24x 4K	192x HD / 48x 4K
SOURCES				

Features

Powerful Management Software

Intuitive software, whether it's TRx, benefit from an unlimited number of ways to control and manage video walls.

Big Data Visualization

VuScape can display any kind of content coming from cloud/network based solutions such as websites, data, third-party SCADA, business analytics and social media data.

Bridging AV and IT

VuWall's unique hybrid and interoperable technology, capture all types of sources with one system and seamlessly integrate with the entire ecosystem.

Touch Panel Control

Give operators the freedom to change layouts and control devices with a simple touch. Create fully customized panels from our web-based control panel designer, quickly and easily, without any programming skills.

VuScape Series 2 Technical Specifications



Product Name		VuScape VS60-2	
Hardware			
CPU	Intel® i5 - 14500		
RAM	32 GB		
SSD	512GB SSD		
Network	1x 1GbE LAN		
Weight	6.2 kg 13.67 lbs		
Case	Minitower		
Dimensions	356 x 169 x 385 mm (WxDxH) 14 x 6.7 x 15.16" (WxDxH)		
Power Supply	100-240V –700W		
Operating Conditions	Temperature 5-35°C (40-95°F) Humidity 10%-85%		
Warranty	3 years		
Software			
OS	Windows 10 Enterprise LTSC 64bit		
Management	TRx Centralized Management Platform		
Outputs			
HDMI	Up to 4x HDMI 2.0		
Resolution	4096x2160@60Hz per output		
Inputs			
HDMI	Up to 4x HDMI 1.4		
Resolution	4096x2160@30Hz or 4096x2160@60Hz (4:2:0) per input		
Decoding			
Host CPU Decoding Capability	Default software decoding of 16x D1 or 8x HD (H.264/MPEG-4 Part 10, MPEG-2, MPEG-4)		
Optional Card Decoding Capability	Up to 4x 3840x2160@30Hz or 8x 1920x1080@60Hz or 16x 1920x1080@30Hz or 48x D1 or any mix thereof without exceeding limits		
Stream Format	Protocols: RTSP, RTP, MPEG-2-TS; Distribution: unicast & multicast; Codec: H.264 (MPEG-4 Part 10 AVC) up to Level 5.2; Profiles: Baseline, Main, High, High 10, High 4:2:2, High 4:4:4 Predictive Profile Separate Plane		

Available Part Numbers*

V560-2-4H0	VuScape VS60 with 4x HDMI Outputs
V560-2-4H0-4HF	VuScape VS60 with 4x HDMI Outputs and 4 x HDMI inputs
V560-2-4H0-4HF-16IPD	VuScape VS60 with 4x HDMI Outputs, 4 x HDMI inputs and IP Decoding capability on a physical card.

*All part numbers support CPU host Decoding Capability.

VuScape Series 2 Technical Specifications



Product Name	VuScape VS120-2	VuScape VS280-2
Hardware		
CPU	Intel® Xeon® 8-core Silver 2.1GHz	Intel® Xeon® 8-core Silver 2.1GHz
RAM	32GB	
SSD	1x 500GB SSD Optional: 2 x 500GB SSD RAID1	2x 500GB SSD RAID1
Backplane	4x Slot PCI Express x16	7x Slot PCI Express x16
Network	1x 10GbE + 1x 1GbE	1x 10GbE + 1x 1GbE + 1x 1GbE IPMI
Weight	21-25 kg (shipping weight: 32 kg) 46.3-55.1lbs (shipping weight: 70.5lbs)	
Case	19" 4RU case	
Dimensions	428 x 467 x 176 mm (WxDxH) 16.85 x 18.38 x 6.93" (WxDxH)	
Power Supply	100-240 VAC, 650W	100-240 VAC 2x800W Hotplug, Redundant
Operating Conditions	Temperature 0-35°C (32-95°F) Humidity 20-80%	
MTBF	100,000hrs (Fans = 70,000 hrs)	
BTU	Max. 1700BTU/h to Max. 2500BTU/h	
Noise Level	30dB up to 45dB (Depends on system config + room temperature)	40dB up to 65dB (Depends on system config + room temperature)
Warranty	3 years	
Software		
OS	Windows 10 Enterprise LTSC 64bit	
Management	TRx Centralized Management Software	
Recovery	Easy backup and recovery USB	
Outputs		
Max. Number of Outputs	Up to 12x	Up to 16x (64x with AdScape)
Configuration	High End NVIDIA Quadro GPU with 4x outputs per card / Max. 32,768x32,768 pixel per system	
Resolution	VS-2-4H0 card: HDMI, 4x 4096x2160@60Hz per card VS-2-4D0 card: DisplayPort 1.4, 4x 5120x3200@60Hz per card	
Inputs		
Display Port 1.2	Up to 6x	Up to 12x
HDMI 1.4	Up to 12x	Up to 24x
SDI	6x3G and 6x12G	12x3G and 12x12G
Resolution	DisplayPort up to 3840x2160 and 4096x2160@60Hz, HDMI up to 3840x2160@30Hz up to 3840x2160@60Hz (4:2:0) 4096x2160@60Hz (4:2:0), 4096x2160@30Hz, SDI up to 3840x2160@60Hz (4:2:2)	
Encoding / Decoding		
Host CPU Decoding Capability	Default software decoding of 16x D1 or 8x HD (H.264/MPEG-4 Part 10, MPEG-2, MPEG-4)	
Optional Card Decoding Capability	48x 1080p30 or 12x 4K30 per system	96x 1080p30 or 24x 4K30 per system
Resolution	4x 4Kp30 / 16x 1080p30 / 8x 1080p60 / 48x D1 per encoding or decoding card	
Stream Format	Protocols: RTSP, RTP, MPEG-2-TS, SRT; Distribution: unicast & multicast; Codec: H.264 (MPEG-4 Part 10 AVC) up to Level 5.2; Profiles: Baseline, Main, High, High 10, High 4:2:2, High 4:4:4 Predictive Profile Separate Plane	
Encoding and Recording	Encoding and recording of HDMI input sources and area of interest of the wall Maximum 4K per encoding channel or an area	

Need help? Contact us at sales@vuwall.com

vuwall.com

VuScape Series 3 Technical Specifications

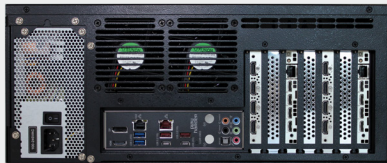


Product Name		VuScape VS640-3	
Hardware			
CPU		Intel® i7 3.6GHz	
RAM		32GB	
SSD		2x 500GB SSD, RAID1	
Backplane		11xSlot PCIe x16	
Network		2x 1GbE	
Weight		21-25 kg (shipping weight: 32 kg) 46.3-55.1 lbs (shipping weight: 70.5 lbs)	
Case		19" 4 RU case	
Dimensions		428 x 467 x 176 mm (WxDxH) 16.85 x 18.83 x 6.93" (WxDxH)	
Power Supply		100-240 VAC 800W using redundant N +1 hot swappable modules	
Operating Conditions		Temperature 0-35°C (32-95°F) Humidity 20-80%	
MTBF		100,000 hrs. (Fans = 70,000 hrs.)	
BTU		Max. 2,500 BTU/h	
Noise Level		40dB up to 65dB (Depends on system config + room temp)	
Warranty		3 years	
Software			
OS		Windows 10 Enterprise LTSC 64bit	
Management		TRx Centralized Management Software	
Recovery		Easy backup and recovery USB	
Outputs			
Max number of Outputs		HDMI: Up to 24x 3840x2160@60Hz or up to 32x 1920x1080@60Hz Up to 96x 1920x1080@60Hz w/AdScape or up to 32x 1920x1080@60Hz	
Configuration		4x outputs per card / Max. 32,768 x 32,768 pixel per system	
Inputs			
DisplayPort 1.2 With HDCP 1.4 Support		Up to 32x (expandable)	
HDMI With HDCP 2.2 Support		Up to 32x (expandable)	
DVI/VGA/HDMI		Up to 64x (expandable)	
Resolution		Up to 4096x2160@60Hz (DP1.2 and HDMI) up to 3840x2160@30Hz (HDMI 1.4) 1920x1200 (DVI/VGA), 1080i (component)	
Analog Inputs		Up to 128x	
Formats		Composite/S-Video with NTSC/PAL/SECAM (8x per board)	
SDI Inputs		Up to 64x	
Formats		3G-SDI, HD-SDI and SDI (SMTPE 352 Payload Identifiers)	
Decoding			
Host CPU Decoding Capability		Default software decoding of 16x D1 or 8x HD (H.264/MPEG-4 Part 10, MPEG-2, MPEG-4)	
Optional Card Decoding Capability		192x 1080p30 or 48x 4K30 per system	
Resolution		3x 4Kp30 / 12x 1080p30 / 6x 1080p60 / 50x D1 per VS-3-12HDIPD decoding card	
Stream Format		Protocols: HTTP, RTSP, RTP, UDP Containers: MPEG4 part 1, MPEG2-TS, WMV, MOV Distribution: unicast & multicast Codec: H.264 (MPEG4 Part 10 AVC), VC-1, MPEG2 Part 2 & MJPEG	

VuScape Series



VuScape VS120, VS280, VS640



VuScape VS120-2 Rear



VuScape VS280-2 Rear



VuScape VS640-3 Rear



VuScape VS60-2 Front



VuScape VS10-4 Front



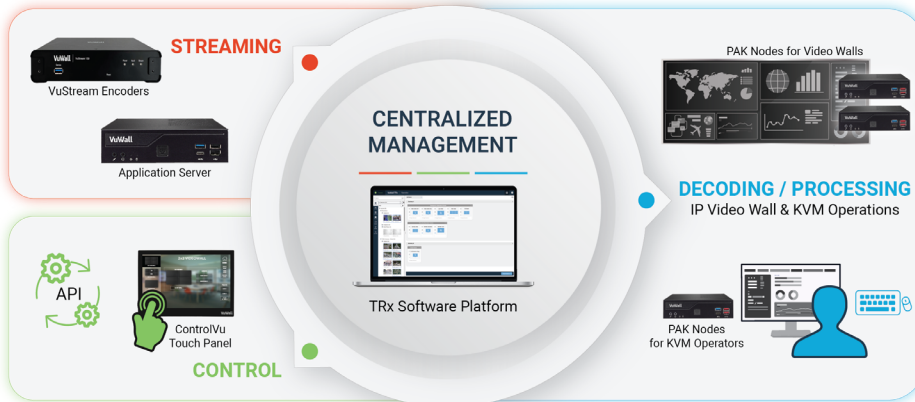
VuScape VS10-4 Rear

*Images shown here are not proportional. Please consult technical specifications for dimensions.

The VuWall Ecosystem

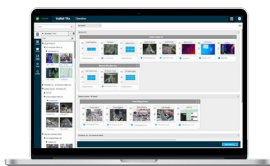
Unified Visualization & Video Wall Control

The VuWall ecosystem of interoperable products is built on a unique standards-based architecture that provides the most effective distribution of visual information, from any source to any display throughout organizations.



At the center of the ecosystem is the TRx Centralized Management Platform. TRx bridges AV, IT and IP systems ensuring interoperability and ease of use, simplifying AV-over-IP deployments, thus reducing deployment time and integration risk.

Video Wall Management & AV Distribution Made Simple From Any Source to Any Display



TRx
Centralized Management



PAK
Video Wall & KVM Nodes



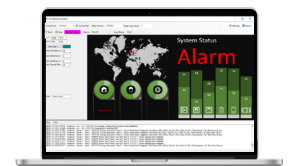
VuStream
Encoders & Decoders



ControlVu
Touch Panel



VuScape
Custom Video Wall Controllers



Enhancements
More Interoperable Products

Contact Information

CORPORATE HQ

VuWall Technology Inc.
181 Hymus Blvd., Suite 301
Montreal, Quebec
H9R 5P4, Canada
+1 514 505 4436

EUROPEAN HQ

VuWall Technology Europe GmbH
Birnenweg 15
72766 Reutlingen
Germany
+49 7121 766620

US OFFICE

VuWall USA Inc.
1000 Holcomb Woods Parkway
Suite 401
Roswell, GA, 30076 USA
(844) 933 9255



VuWall

Control what you see.

www.vuwall.com

sales@vuwall.com