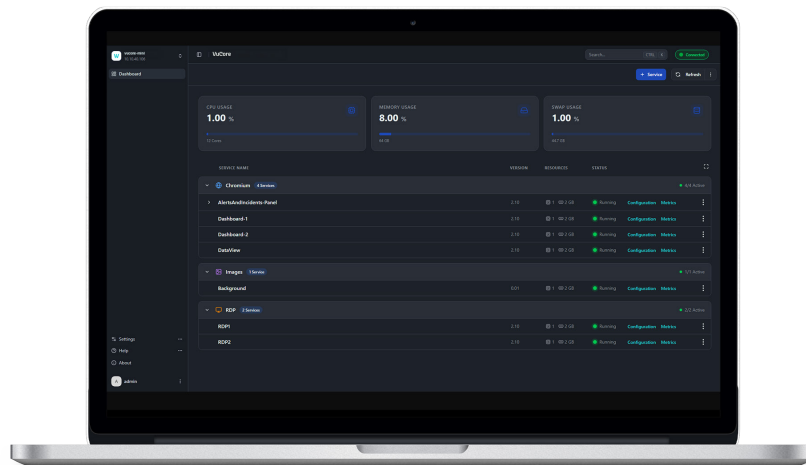


VuCore™

Centralized Platform for Virtual Services

Simplify Control Room Deployments and Maintenance with One Centralized and Scalable Platform

The VuCore™ platform provides the centralized foundation for VuWall's ecosystem of visualization, control, and operational services. In addition to providing secure access to websites, dashboards, RDP sessions, and files, VuCore hosts TRx centralized management software and PAK Dispatcher. Available in a compact form factor or a rackmount unit, VuCore is designed to support current and future VuWall services as control room requirements evolve. By bringing key services and sources together on one secure, scalable platform, VuCore simplifies the deployment, management, and expansion of video wall and KVM projects.



CENTRALIZED SERVICES

Host TRx, PAK Dispatcher, websites, dashboards, RDP sessions, and files.



SIMPLIFIED DEPLOYMENT

Bring key services and sources together on one platform.



SECURE ACCESS

Provide controlled access to operational content while reducing exposure.



SCALABLE PLATFORM

Support current and future VuWall services as requirements evolve.



ALWAYS-AVAILABLE SOURCES

Keep web, dashboard, RDP, and file-based content ready for operators when needed.



REDUCED COMPLEXITY

Reduce unnecessary devices and simplify system architecture.

VuCore Centralized Platform

VuCore unifies key virtual services and operational sources on a single secure appliance, simplifying deployment, maintenance, and expansion while providing a scalable foundation for mission-critical environments.

As control room systems become more software-driven and interconnected, VuCore centralizes the deployment and management of VuWall and third-party services and sources. It helps integrators and end users reduce complexity, streamline system management, and scale visualization and control workflows as technical and operational requirements evolve.

Key Features & Benefits

Simplified Management

- Single platform for services and sources
- Streamlined configuration, maintenance, and scaling
- Reduced system complexity for AV & IT teams

High Availability with Clustering

- Support for clustered VuCore deployments (e.g., 3, 5, or 7 nodes)
- Automatic failover ensures continuity of services if an appliance becomes unavailable
- Minimizes downtime for mission-critical operations

Mission-Critical Reliability

- Integrated backup capabilities
- Centralized service monitoring and diagnostics
- Supports rapid recovery and operational continuity

Secure Access to Operational Content

- Centralized hosting of TRx centralized management software, PAK Dispatcher, dashboards, websites, RDP sessions, and files
- Enables controlled and secure access across operators and systems

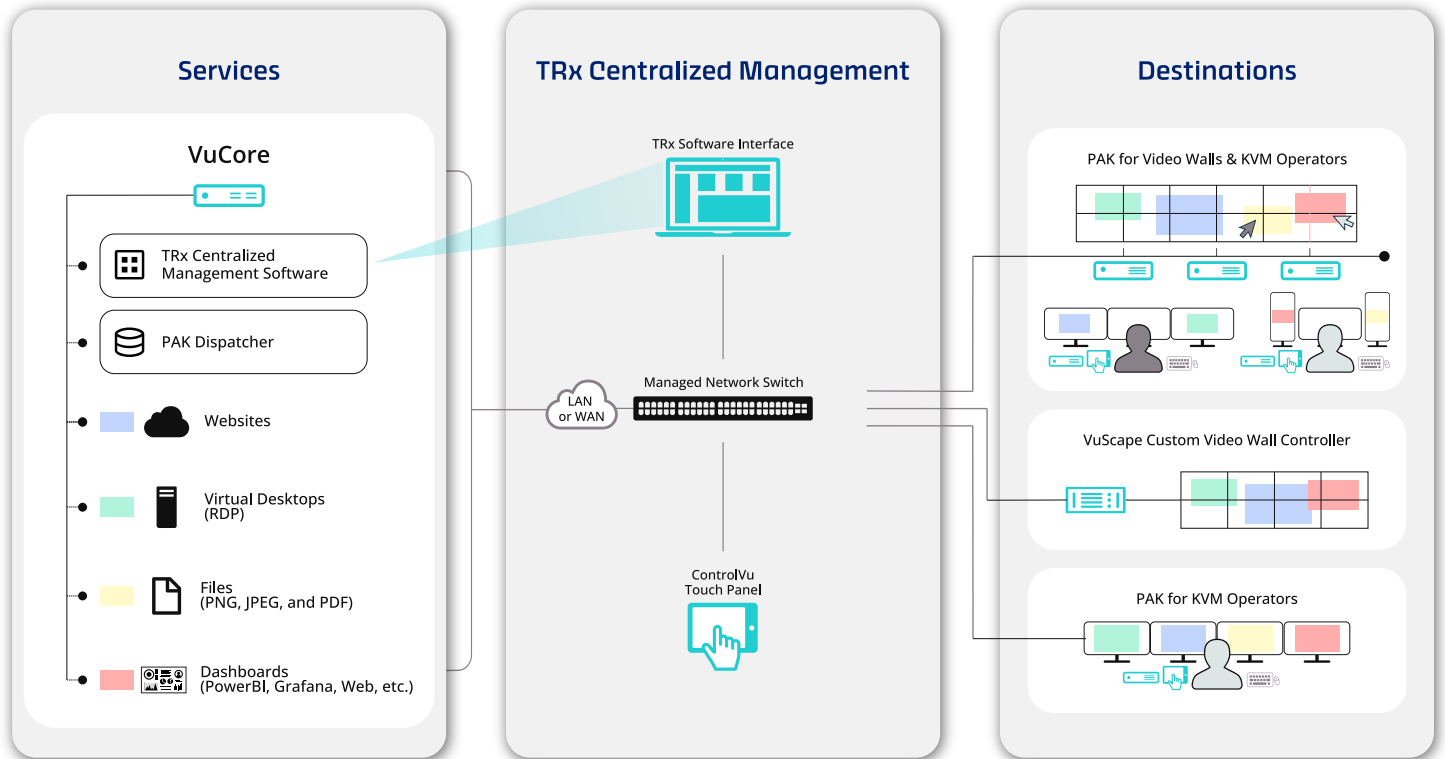
Scalable Architecture

- Supports evolving system requirements and future VuWall services
- Flexible deployment options, including compact and redundant rackmount configurations

Operational Efficiency

- Faster access to critical information and services
- Streamlined workflows across visualization and control systems

Workflow



Applications

Control Rooms



VIDEO WALL CONTROL & KVM

Crisis Rooms



UNIFIED VISUALIZATION

VuCore Technical Specifications

Product Name	VuCore Mini	VuCore 1RU
Part Number	TBD	TBD
Hardware		
Weight	1.3 kg / 2.9 lbs	10 kg / 22 lbs
Dimensions	165 x 200 x 39.5 mm (WxDxH) 6 x 7.9 x 1.55" (WxDxH)	437 x 503 x 43 mm (WxDxH) 17.2 x 19.85 x 1.7" (WxDxH)
Power Consumption	65W	400W
Power Supply	120W adapter Input: 100-240 VAC, 50/60 Hz Output: 19V/4.74A DC	Redundant 400W power supply 2x 100 - 240 VAC
Operating Conditions	Operating temperature range: 0-40°C / 32-104°F Relative humidity, non-condensing: 10-90%	Operating Temperature range: 5-35°C / 41-95°F Relative humidity, non-condensing: Humidity: 10-90%
Cooling	Fanned: active cooling	
Noise Level	36 dB	Max. 61 dB (Depends on system config and room temperature)
Warranty	3 years	
Network Interface		
IP Version	IPv4 and IPv6	
IP Addressing	Static IP and DHCP (Default)	
Software		
Management	VuCore Configuration Tool and VuWall TRx	
Capabilities		
Supported Templates/ Services	TRx Centralized Management Software, PAK Dispatcher, Chromium (websites, dashboards, and PNG, JPEG, PDF files) and RDP* Sessions	
Audio	Not Supported	
Mounting Hardware		
Rackmount	Rackmount kit available to mount 2 x Application Servers (sold separately – part number: PAK-Rack-Mounting-Plate)	Rackmount kit available to mount 2 x VuCore appliances (sold separately - part number: TBD)

*The RDP Service supports Remote Desktop connections exclusively with Windows 10 or newer. Support for Windows 7 and earlier versions is not available.

Contact Information

CORPORATE HQ

VuWall Technology Inc.
2020 Trans Canada Route,
Suite 400
Dorval, QC. H9P 2N4, Canada
+1 514 505 4436

EUROPEAN HQ

VuWall Technology Europe GmbH
Birkenweg 15
72766 Reutlingen
Germany
+49 7121 766620

US OFFICE

VuWall USA Inc.
1000 Holcomb Woods Parkway
Suite 401
Roswell, GA, 30076 USA
(844) 933 9255



VuWall
Control what you see.

www.vuwall.com
sales@vuwall.com